

Sign in to MIF IT Resources For Lecturers and Students

MIF e-Identity (MIF e-ID)

MIF e-Identity IS NOT VU e-Identity

1. Make sure that your **VU e-mail is working and you have VU e-identity (VU e-ID) credentials**. Instructions how to manage them see below.
2. Your **MIF credentials are created automatically** after you are officially employed or enrolled at VU MIF.
3. **Set up a MIF e-ID password**. Go to <https://mif.vu.lt/passwd2en> (sign in with VU e-ID credentials).
4. Locate your MIF username* (see figure at the right, emphasized in red).
5. Create and enter **MIF e-ID password**, press the button **"Change"**.

Use **MIF e-ID credentials** to access MIF IT resources.

*MIF username is created using:

- **student** – *nasuxxxx*, where **NA**me **SU**rname, x – number;
- **employee** - *mifxxxxx*, where xxxxx is employee number.

VU MIF user password

You are connected as s1234567 (name.surname@mif.stud.vu.lt) [Logoff](#)

Choose user to change password:

nasu1234 Name Surname (uid=**nasu1234**ou=MIF studentai,ou=people,dc=mif,dc=vu,dc=lt)

Password:

Repeat:

More information:

- <https://mif.vu.lt/itwiki/>
- <https://mif.vu.lt/epaslaugos>

If you have any problems with MIF IT resources, please register them:

- pagalba@mif.vu.lt
- 304 Room (Didlaukio Str. 47), tel. 8 5 219 5006
- 202 Room (Šaltinių Str. 1A), tel. 8 5 219 3058

VU e-Identity (VU e-ID)

The screenshot shows the 'Identity management system' registration page. It has a navigation bar with four tabs: HOME, TERMS AND CONDITIONS, PASSWORD, and QUESTIONS. The main content area is titled 'Registration for VU Employees and Students' and contains several input fields: 'Personal Number (LT)', 'Date of Birth' (YYYY-MM-DD), 'Student Card Number (for students)' (e.g. 1710123), 'Employee Number (for employees)' (e.g. 12345), and 'Communication Language' (set to Lithuanian). At the bottom, there is a reCAPTCHA 'I'm not a robot' checkbox and 'CANCEL' and 'CONTINUE' buttons.

Figure 1

Manage your VU e-ID credentials

Every new VU employee and student must register here <https://id.vu.lt> (see figure 1).

You can fill in **VU e-ID** registration also on MIF computers, if you see the menu box as shown in figure 2. You have to select:

Help -> VU e-Identity.

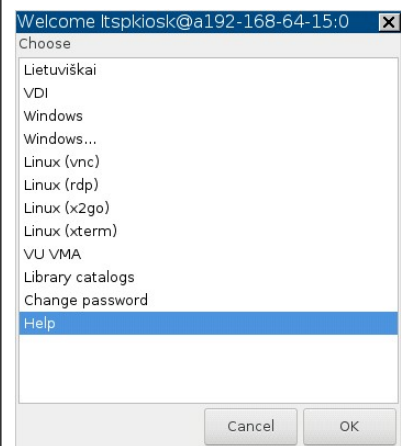


Figure 2

For VU e-ID registration you need to know your personal ID number and:

- **Student Card Number** – students can check it here <https://isp.lt/en> ;
- **Employee Number** – employees can contact the MIF staff specialist by phone +370 5 219 3094.

VU e-mail can be accessed at:

- <https://office365.vu.lt> by students;
- <https://exchange.vu.lt> by employees.

NOTE: Now you are able to create MIF e-ID.